

BLM Management of Off-Road Travel in the National Petroleum Reserve- Alaska (NPR-A)

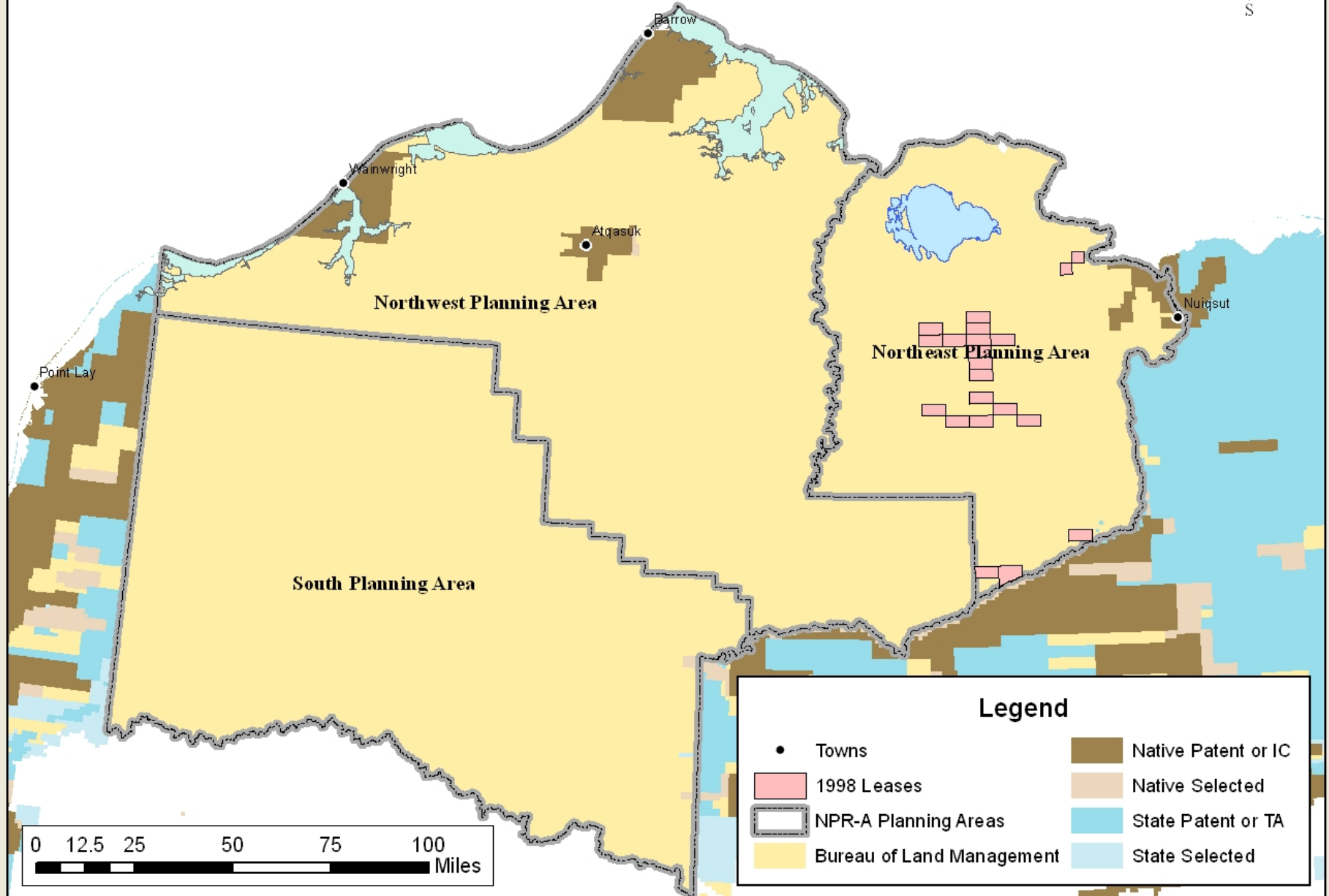


Outline

- Rules
 - Northeast NPR-A 1998 Record of Decision
 - Northwest NPR-A 2004 Record of Decision
 - Northeast NPR-A 2008 Record of Decision
- Challenges
 - Projects in remote areas
 - Project employee experience



National Petroleum Reserve-Alaska



Definitions

- Off-road
 - Not on constructed ice road
 - Activities such as seismic, snow trails and overland tundra travel with equipment larger than a snowmachine
- Heavy Equipment
 - Typical construction equipment, including 4x4 pickup, front-end loader, rock truck



Northeast 1998 ROD

- Official Tundra Opening and Closing
- 6/12 Rule: 6 inches of snow cover and 12 inches of continuous frost in the soil (ground hardness)

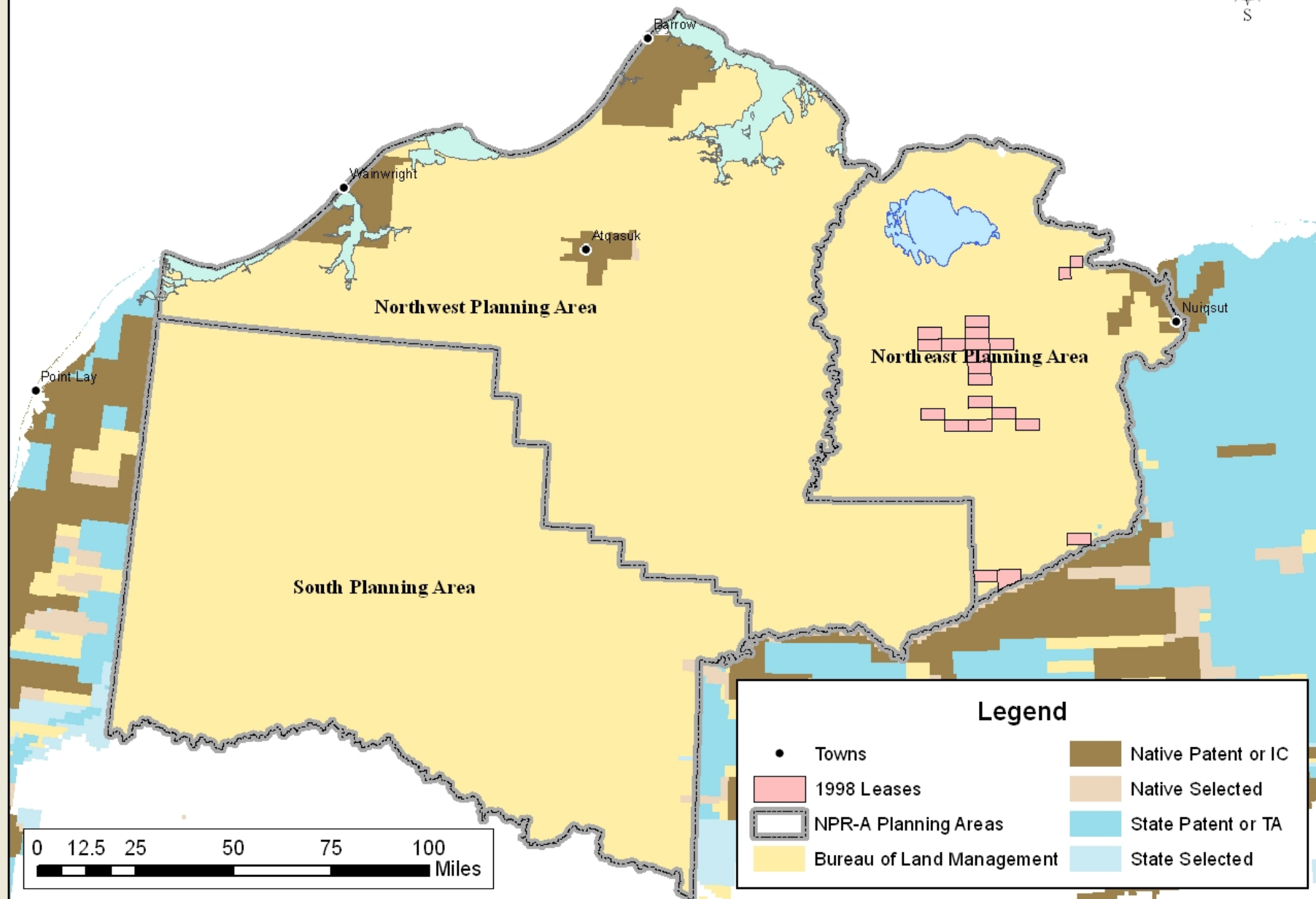
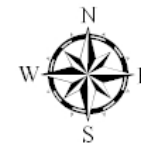


NW 2004 & NE 2008 ROD

- No Official Tundra Opening
- Officially closed tundra
- Performance based standards
- No 6/12 rule
- Project oriented
- Purpose is to encourage innovation



National Petroleum Reserve-Alaska



Challenges

- Remote Projects
 - Long distances
 - Time sensitive
 - Available water sources
 - Habitats

Challenges

- Project Employee Experience
 - Equipment
 - Habitats
 - Knowing the rules



Summary



- Project planning
 - Know the rules
 - Understand your responsibilities
 - Flexibility
- Project Implementation
 - Know the project area
 - Educated and informed project employees

Questions?

