

How States are Approaching TSMO

Dean Deeter, P.E.
Athey Creek Consultants



How States are Approaching TSMO

Integrate TSMO Into
Existing Organization

Break Out TSMO as a
New Bureau, Office, or
Division

How States are Approaching TSMO

Integrate TSMO Into Existing Organization

Washington State DOT

Washington State DOT

- Operations Program since the early 1990s
- Program was separate from maintenance & focused on what is now TSMO
- Decided to integrate TSMO into the existing organization
- Lead Responsibility in Traffic Office
- Has incorporated TSMO concepts in all capital design projects

How States

Integrate TSMO In
Existing Organizat

Washington State DOT

Utah DOT

Utah DOT

- Supported at the Executive Level
- Incorporating it within the overall UDOT structure
- Lead is with Traffic Management Office
- UDOT Traffic Management Office:
 - Consolidates **ITS** and the **Traffic Operations Center (TOC)** into one technology centered office
 - Responsible for planning, designing, installing, operating, and maintaining advanced ITS technologies to improve transportation mobility, safety, economic prosperity, and customer satisfaction.

How States are Approaching TSMO

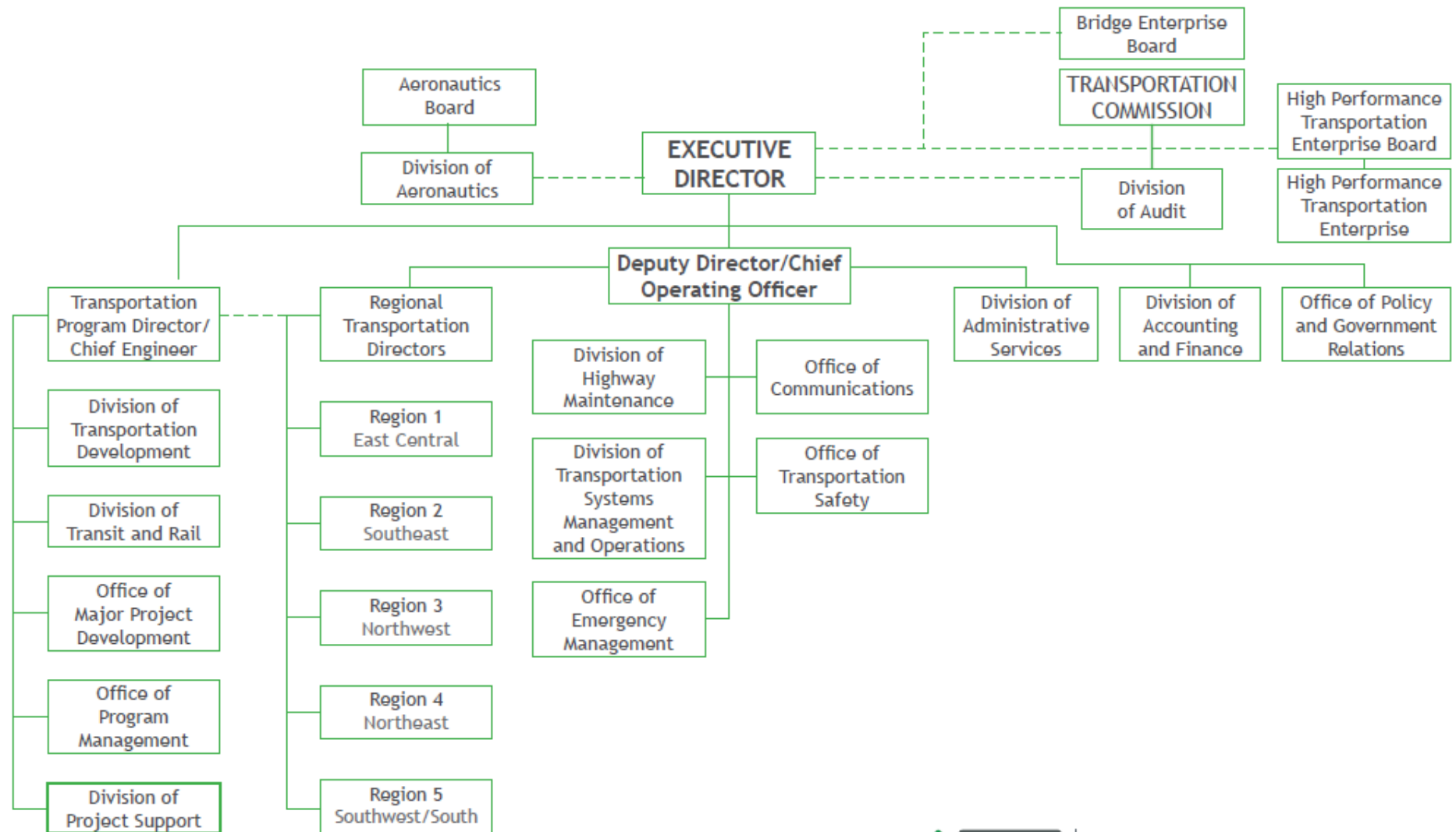
Colorado DOT

- Reorganized to break out separate TSMO Division
- TSMO Division includes five branches:
 - (1) Traffic, Safety and Engineering Branch,
 - (2) Intelligent Transportation Systems/Technology Branch,
 - (3) Active Traffic Management and Operations Branch,
 - (4) Corridor Management and Incident Command Branch with special focus on Courtesy Patrol and Heavy Tow programs, and
 - (5) Planning, Performance and Transportation Demand Management Branch.

Break Out TSMO as a New Bureau, Office, or Division

Colorado DOT

Colorado DOT Organizational Structure



COLORADO
Department of Transportation

How States are Approaching TSMO

Integrate TSMO Into Existing

Iowa DOT

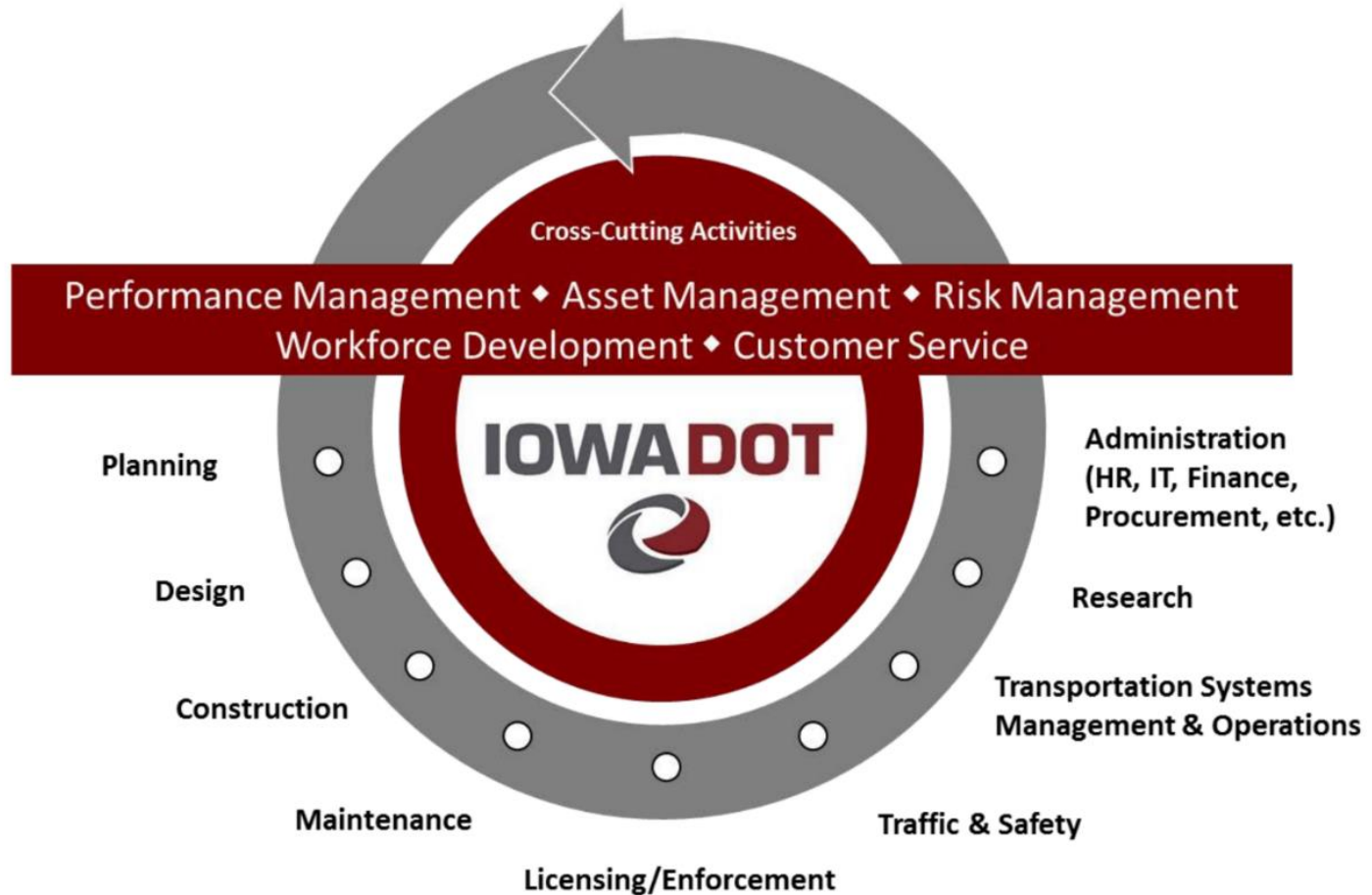
- Established a new ***Bureau for Systems Operations***, includes:
 - **Office of Maintenance,**
 - **Office of Traffic and Safety,** and
 - **Traffic Operations.**
- They have taken a broad view of TSMO, not just traffic operations /management and ITS.

Break Out TSMO as a New Bureau, Office, or Division

Colorado DOT

Iowa DOT

Iowa DOT TSMO Program Plan



Source: Iowa DOT

“TSMO does not replace any of the current responsibilities; instead, it builds upon the people, processes, and systems already in place, and offers resources and strategies to realize the full capacity of the existing transportation system, as shown by the basic and cross-cutting activities performed by Iowa DOT”

-- excerpt from Iowa DOT TSMO Program Plan

Iowa DOT TSMO Program Plan

8 Service Layers

Traffic
Management
Center

ITS and
Communications

Traveler
Information

Traffic Incident
Management

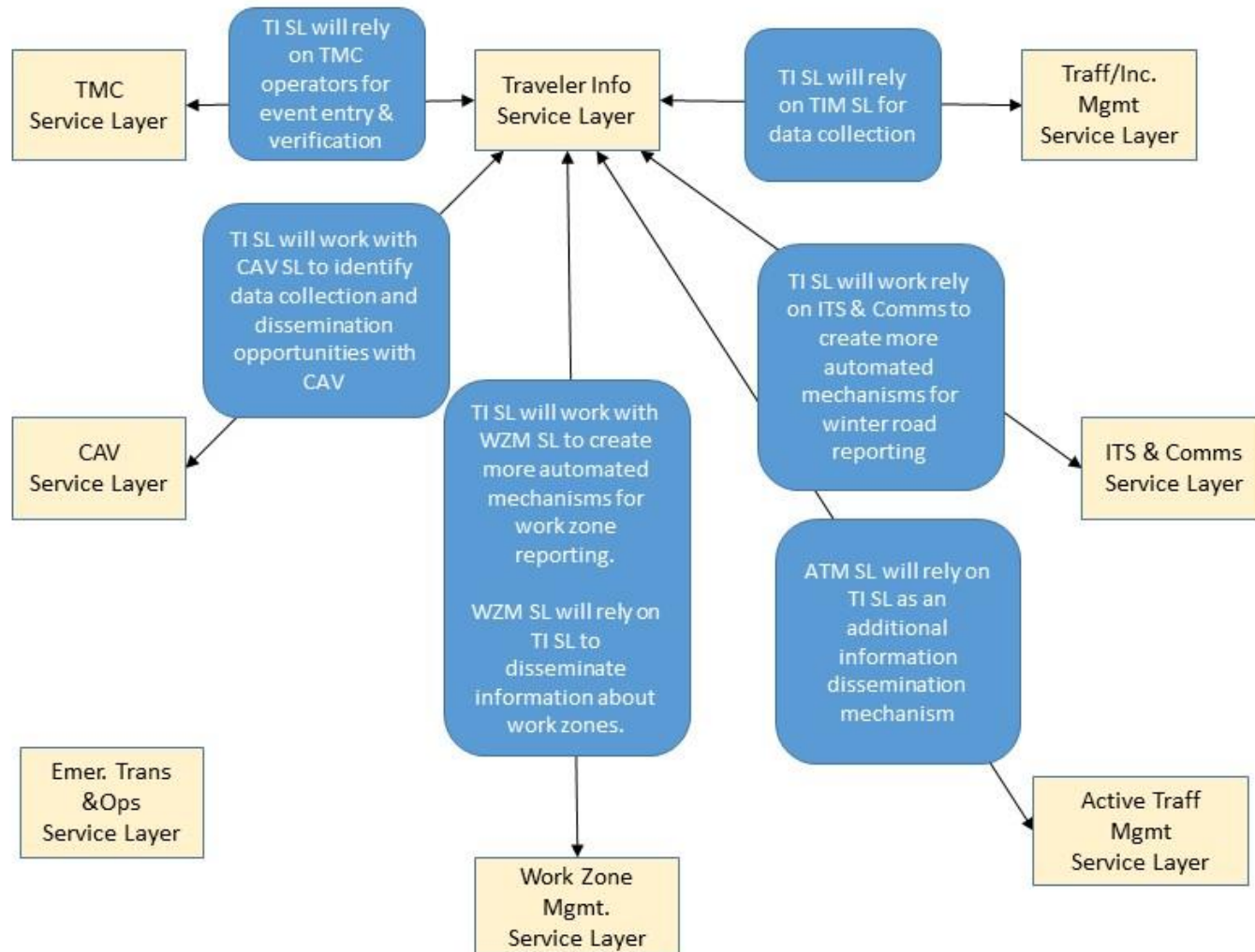
Emergency
Transportation
Operations

Work Zone
Management

Active
Transportation and
Demand
Management

Connected /
Automated
Vehicles

Iowa Traveler Information Service Layer



How States are Approaching TSMO

Integrate TSMO Into Existing
Organization

Washington State DOT

Utah DOT

Break Out TSMO as a New
Bureau, Office, or Division

Colorado DOT

Iowa DOT

Questions?

Dean Deeter

deeter@acconsultants.org

503-709-2655